

Welcome To The Future

Thank you for your enquiry regarding CompuServe membership. Joining CompuServe is easy - all you need is a computer, a modem and some communications software.

To help you join CompuServe, we are pleased to offer you the *CompuServe Membership Kit* which includes:

- *CompuServe Information Manager* software for either MS-DOS or Macintosh computers which provides a user-friendly, windowing interface to the full power of CompuServe.
- A complete Users Guide for CompuServe and the Information Manager, including commands used to navigate your way between services and databases on CompuServe.
- A A\$40/NZ\$50 usage credit towards your CompuServe Pacific account.

To get the most out of CompuServe, we recommend *The CompuServe Almanac*, a compendium of all services available on CompuServe including Special Interest Forums, news and finance services and the Electronic Mall for shopping via your personal computer. Also, we have the *CompuServe Navigational Wall Chart* and the *CompuServe Explorers' Guide Desk Mat* which provide a quick and handy reference to CompuServe services.

Macintosh users may also consider *The CompuServe Navigator*, an ingenious piece of software which enables you to pre-define your CompuServe sessions. Just tell Navigator your information requirements and it will automatically connect and retrieve the information in a minimum of time.

Which ever way you choose, CompuServe is bound to give you access to more information, more computer software and more enjoyment than you ever dreamed possible!

We look forward to seeing you on CompuServe Pacific!

Yes! Please send me the following:

	SA	SNZ	
___ x Membership Kit for MS-DOS	\$60	\$80	\$ _____
___ x Membership Kit for Macintosh	\$65	\$85	\$ _____
___ x Membership Kit for other computers	\$60	\$80	\$ _____
___ x CompuServe Navigator for Macintosh	\$95	\$120	\$ _____
<u>1</u> x CompuServe Almanac (Book)	\$25	\$35	\$ <u>25</u>
___ x Explorers' Guide Desk Mat (laminated)	\$25	\$35	\$ _____
<u>1</u> x Navigational Wall Chart*	\$3	\$5	\$ <u>3</u>

Postage and Handling (A\$5/NZ\$10 per item) \$ 5

*Free postage for Wall Chart if ordered with other items.

Total \$ 33

Billing method:

- VISA
- MasterCard
- Bankcard
- American Express
- Cheque enclosed
- Please Send Invoice (Companies only)

Allow 2-3 weeks delivery

Make cheques payable to "Fujitsu Australia Ltd"

Name _____

Address _____

Suburb. Postcode _____

Phone _____

Credit Card Number _____

Expiry Date _____

Send to: CompuServe Membership, Fujitsu Australia Ltd, 475 Victoria Ave, Chatswood 2067, Australia.
Enquires and Phone Orders: Australia (008) 025 240, New Zealand (0800) 446 113 or Fax Sydney: (02) 411 8603

Software for Connecting with CompuServe

There are many ways to connect with CompuServe.

Standard communications software used for connecting with Bulletin Boards can be used to connect with CompuServe. Many of these products boast 'scripting' languages which enable complex operations to be performed at the press of a key, or the click of a mouse.

There are also products specifically tailored to CompuServe. These include the CompuServe Information Manager (CIM for MS-DOS and Macintosh), CompuServe Navigator (for Macintosh) and TAPCIS (for MS-DOS).

Information, updates and usage scripts on all these products are available on-line from CompuServe. The products detailed below may be directly ordered from Fujitsu Australia.

CompuServe Information Manager

CompuServe Information Manager (CIM) is a software product developed by CompuServe, that provides a simple yet powerful windowing interface with pull-down menus, dialog boxes and mouse support. CIM gives you access to all of CompuServe's online services including Forums, CB, Securities Quotations, CompuServe Mail and much more.

Features:

- MS-DOS and Macintosh versions available
- Intuitive windowing environment
- Error-free data transmission using CompuServe's B+ Protocol
- Local/offline message editing
- Integrated local address book (compatible with CompuServe Navigator)
- Familiar desktop metaphor for messages
- Favourite Places menu for Quick Access
- Message Maps which graphically represent Forum Conversations
- Electronic Conferencing Support with split screen and multiple windows
- Graphic Interchange Format (GIF) Support
- Mouse Support

CompuServe Navigator

CompuServe Navigator is a communications program designed for Macintosh computers.

Navigator users can pre-define their entire CompuServe session prior to the time they actually access the CompuServe Information Service. Once the session is set up, Navigator will go online and retrieve the information the user requested.

Navigator allows users to browse a Forum's Libraries and respond to their Forum and CompuServe Mail messages off-line (while the billing clock is not running).

Navigator can also stop part of the way through its session and allow the user to take over control. This allows users to access the other areas of CompuServe that cannot be set up in the pre-defined session.

The CompuServe Navigator is MultiFinder compatible. This allows users to access their other Macintosh programs while the Navigator session is running in the "background".

If unclaimed please return only wrapper to:

Fujitsu Australia Limited (A.C.N. 001 011 427)
PO Box 1183 Chatswood NSW 2057

Print Post Approved No. PP 230017/00001
Issue 7 of 12

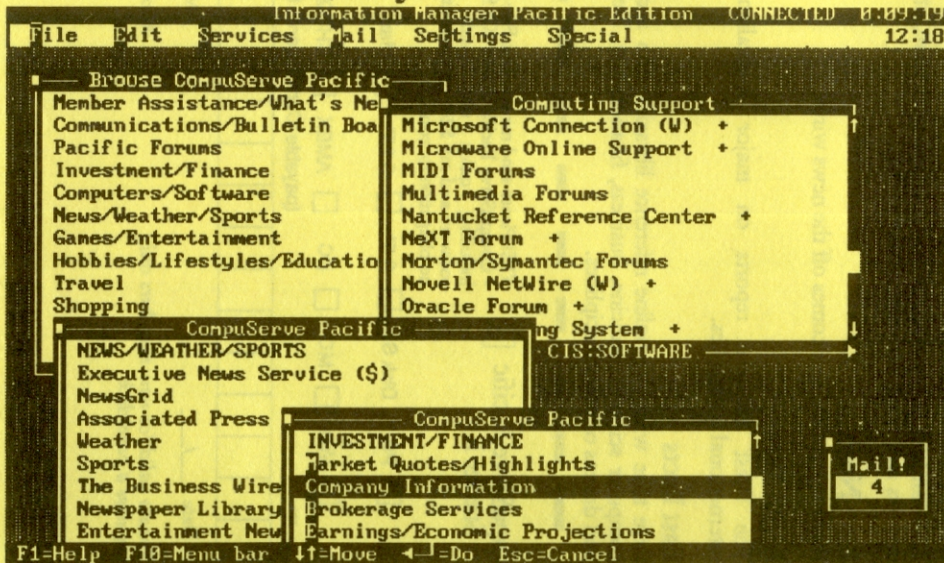
Is this what you see on CompuServe?

CompuServe Pacific

- 1 Member Assistance/What's New (FREE)
- 2 Pacific Mail/Communications
- 3 Pacific Forums
- 4 Investment/Finance
- 5 Computers/Software
- 6 News/Weather/Sports
- 7 Games/Entertainment
- 8 Hobbies/Lifestyles/Education
- 9 Travel
- 10 Shopping
- 11 Reference
- 12 Business/Other Interests

Enter choice !

For \$20 you can see this*



* Turn over for details. Offer valid in Australia only.

**SURFACE
MAIL**

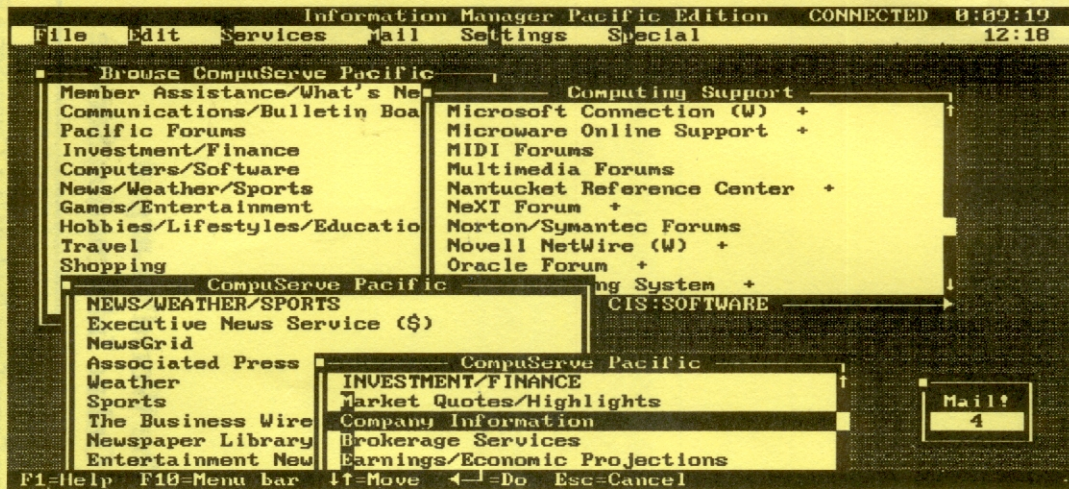
**POSTAGE
PAID
AUSTRALIA**

AUSTRALIA

The World's Largest Personal Online Information Service

Special promotions offering CompuServe Products (e.g. CompuServe Bag, Chart, usage credits) listed in the CompuServe Magazine are not valid for Australian/New Zealand members unless otherwise indicated. Please contact Customer Service for further details. Australia 008 025 240 / New Zealand 0800 446 113.

The World's Largest Personal Information Service



... is now on your desk.

CompuServe Pacific gives you access to the world's largest collection of electronic services in one place by using your own personal computer and modem for 60 cents a minute for online usage.

- ✓ **24 Hour Product Support**
Serious support from the industry experts for whatever computer you have.
- ✓ **Unlimited Software**
Thousands of public domain and shareware software, utilities, updates and bug fixes just for the asking.
- ✓ **Raw News**
Right up-to-date as it comes off the news wires.
- ✓ **Invest Wisely**
The latest financial reports on major Australian and international companies.
- ✓ **Fast Facts**
Save time with our online reference libraries with access to computer science, medicine, business, finance, law, literature and dozens of other disciplines.

- ✓ **Budget Travel**
Find those discount airfares for your next business trip or holiday.
- ✓ **Low Cost Mail**
Get messages fast and cheaply to a colleague, family member or friend anywhere around the world.

THE RISK FREE OPTION:

The CompuServe Pacific Starter Kit

Invest \$20 and get \$20 back. Join the over one million other members worldwide with our special introductory Starter Kit for \$20, including access software, a quick start guide and a \$20 usage rebate* (up to half an hour of free usage) with no obligation to continue.

Complete and fax your coupon to (02) 410-4223 or call 008 025 240 for more details. Offer valid in Australia only.

CompuServe Pacific Starter Kit

YES! Please send me my Risk Free Option - CompuServe Pacific Starter Kit for \$20, including quick start guide, access software and my \$20 usage rebate* with no obligation to continue.

PC ** Disk Size 3.5" 5.25" Mac

Bill to: Visa MC BC AMEX CHEQUE
(payable 'CompuServe Pacific')

--	--	--	--	--	--	--	--	--	--	--	--	--	--	--	--	--	--	--	--	--

Expiry Date ___/___/___

MAG9207

* Rebate valid for new members only
** Requires a hard disk

Allow 10 days for delivery

Name on Credit Card _____

Signature _____

Deliver to:

Name _____

Company _____

Street Address _____

Suburb, State, Postcode _____

Telephone _____

Please send to:
Starter Kit Offer
CompuServe Pacific
475 Victoria Avenue,
CHATSWOOD NSW 2067
Fax No. (02) 410-4223

CompuServe[®]
Pacific