

**For the
Macintosh**



TRUMP CASTLE II

CASINO • RESORT • BY THE BAY

**Baccarat
Blackjack
Craps
Roulette
Video Poker
Slots**



Featuring:

- **Multi-Player Capabilities**
- **Digitized Photos & Sound**



Capstone

THE PINNACLE OF
ENTERTAINMENT SOFTWARE

**For the
Macintosh**

TRUMP CASTLE II

CASINO • RESORT • BY THE BAY



Digitized animation captures the sights and sounds of gaming excitement.

Welcome Macintosh users -- to **TRUMP CASTLE II**, the Ultimate Casino Gambling Simulation inspired by the fabulous **Trump Castle Casino Resort By the Bay** in Atlantic City. Now you can enjoy all the glamour, games and thrills of trying to capture a king's ransom--just as if you were actually inside Trump Castle! Multi-player capabilities, pull-down menus and actual digitized photos and sound straight from Atlantic City will make even a seasoned casino veteran feel right at home!

Hone your skill and try your luck with these six popular gambling games:



Pull-down menus make it easy for everyone to "Mac-gamble".

BACCARAT Play the New Jersey version, derived from Chemin de Fer--one of Europe's oldest and most popular card games.

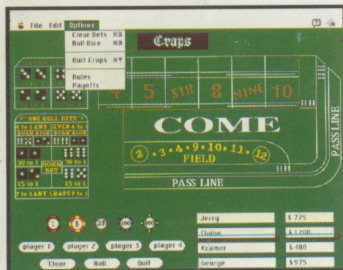
BLACKJACK It's the game of "21", for up to four players--or practice strategies playing multiple hands

CRAPS There's excitement in every roll of the dice with this multi-faceted, fast-paced game

ROULETTE Discover the many different types of bets and payoffs that roulette offers

VIDEO POKER Animated, 5-card draw poker--just like the poker machines, popular everywhere

SLOTS No casino is complete without at least one slot machine!

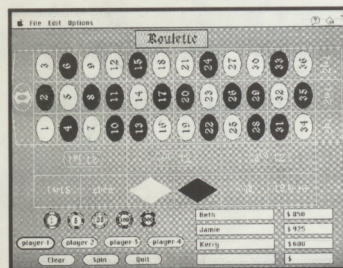


Multi-player capabilities mean casino fun for up to four players.

Game play follows the rules and regulations of the New Jersey Casino Control Commission (except Video Poker).* It's the perfect way to prepare for your next visit to Atlantic City!

Experience the super charged atmosphere of Trump Castle Casino Resort, as you *move* about the spectacular casino. Digitized photos, animation, plus realistic graphics and sound bring the king-size excitement of Trump Castle right to your computer screen. Play your cards right and live the luxurious life of a "high roller", or watch a fortune disappear as you let it ride one time too many! Whatever your game, it's a safe bet you'll love the challenge and thrills of **TRUMP CASTLE II... Good Luck!**

*These rules and regulations may change from time to time. Always check actual gambling.



Graphics are great on both color and black and white monitors.

REQUIREMENTS: Macintosh computer with 1 megabyte of available memory. Supports both color and black and white monitors.



TRUMP CASTLE II

Macintosh
Black & White Disk



— THE PINNACLE OF —
ENTERTAINMENT SOFTWARE

Capstone is a trademark of IntraCorp, Inc.
All Rights Reserved. Software © 1992, IntraCorp, Inc.

TRUMP CASTLE II

Macintosh
Color Disk



— THE PINNACLE OF —
ENTERTAINMENT SOFTWARE

Capstone is a trademark of IntraCorp, Inc.
All Rights Reserved. Software © 1992, IntraCorp, Inc.

TRUMP CASTLE II

For The Macintosh User Manual



Contents

Introduction	1
Getting started	2
Requirements	2
Installation	2
Running the Program	3
Starting the Program	3
Bankroll	3
Playing the Game	7
Color Version.....	4
Black & White Version	5
Menus	5
The Games	6
Roulette	6
Craps	8
Blackjack	9
Video Poker	11
Baccarat	12
Slot machine	13
Miscellaneous	14
Additional Information	15
Backups	15
Technical Support	15
Credits	15

Introduction

Welcome to **TRUMP CASTLE II**, the all new Ultimate Casino Gambling Simulation inspired by the fabulous Trump Castle Casino Resort by the Bay in Atlantic City. Enjoy all the glamour, games and thrills of trying to capture a king's ransom - just as if you were actually inside Trump Castle.

Experience the super-charged atmosphere as you move about the spectacular casino. Catch conversations around the gaming tables. Digitized photos, animation, plus realistic graphics and sound bring the king-size excitement of Trump Castle right to your computer screen.

TRUMP CASTLE II offers six popular gambling games - Baccarat, Blackjack, Craps, Roulette, Video Poker, and Slots - each with multi-player capabilities. Enjoy simultaneous casino action for up to four players, or practice strategies playing multiple hands. Game play follows the rules and regulations of the New Jersey Casino Commission (except Video Poker).

From the exciting animation and sound to the realistic game play, multi-player capabilities and more - **TRUMP CASTLE II** sets a new standard for casino computer programs. So get ready for unlimited excitement and fun. Whatever your game, it's a safe bet you'll love the challenge and thrills of **TRUMP CASTLE II**. Good Luck!

*These rules and regulations may change from time to time. Always confirm all rules in effect prior to actual gambling.

Getting started

Requirements

In order to run Trump Castle II you will need the following equipment:

- A Macintosh computer
- 1 MB available RAM for the Color Version, 512K available RAM for the Black & White Version.
- A hard drive with at least 2 megabytes available.

NOTE: Please be sure you have the computer properly hooked up and are familiar with its operation. If there are questions about the computer, please refer to your owner's manual.

Installation

Before you can run Trump Castle II, you must install the software. To install Trump Castle II on your hard drive, insert Trump Castle II Disk into your disk drive (insert the color version disk if you have a color system, or insert the black & white disk otherwise).

To install Trump Castle II into its own folder, create a **New Folder** using the File menu and name it **TRUMP CASTLE II**.

Double-click on the Trump Castle II disk icon. Now, double-click on the "**Click on Me**" icon to extract the program onto your hard drive. You will then be asked to select a destination folder for the program. Select the **TRUMP CASTLE II** folder by double-clicking on its name in the file selector.

Once you have selected the folder, click on **Extract** to begin the installation. It will take a few minutes to extract all of the files onto your hard drive.

Running the Program

To run the program, open the TRUMP CASTLE II folder and double-click on the Trump Castle II icon.

Starting the Program

Once loaded, the program will display an opening sequence (Color version only). At any point during the opening, press the mouse button to start the game.

Player's names

Before you start playing the games, you are asked to enter the names of one to four players. Select the number of players. Enter the name for Player #1. For each player that is going to play click in the player's name box and enter his/her name (or press the **TAB** key to move between the name boxes). After you have entered all of the players' names, press the **RETURN** key.

Bankroll

Each time you start the game, you will have \$1,000. You can use this money anywhere in the casino. Use all of your gaming ability to build upon this bankroll.

Playing the Game

Color Version

Trump Castle II uses a point and click interface. Each screen in the game has one or more areas that you can click on to select an option or perform some type of action. Also, many of the people in the program have things to say. When a screen with a digitized picture is displayed, pressing the mouse button will show you a box around each and every available click area on the screen.

To select an area, point at the area and press the button.

The first thing you will see after the opening sequence is the lobby. From the lobby you can access any of the following options:

- Exit the casino
- Visit the cashier
- Play roulette
- Play craps
- Play blackjack
- Play poker
- Play baccarat
- Play slot machines

Exit the casino

Choose this option to leave the casino or click on the escalator to go to the Bus Stop. You will be downstairs preparing to get on the Trump Castle bus. Choose the bus to leave the game.

Visit the cashier

If you run out of money, you can go to the change booth and receive \$1,000.

Black & White Version

After the program loads, the main Trump Castle II screen will be displayed. On this screen are 6 icons representing the six games. To select a game, point at its corresponding icon and click.

Menus

There are three menus that you will use from the Trump Castle II main screen: File, Play and Settings. Their functions are described below

File

Load Old Game

This option allows you to load a game that was previously saved. Select the game from the file selector and choose OPEN.

Save Current game

From the file selector, choose a location for the save file (Trump Castle II folder) and enter a valid filename up to 8 characters in length and press RETURN. The program will save the current game, including players' names and bankroll amounts, to that file.

Quit Trump Castle

This option exits the game and returns you to the desktop.

Play

The Play menu provides an optional way to play any of the six games. Simply select the desired game from the menu.

Settings

Sound

A check mark will appear next to the Sound option if sound is turned on. To turn sound off, select this option. To turn sound back on, select this option again.

Display Results

If you want the program to display the results of each turn (e.g. spin of the slot machine), select this option. A check mark will appear next to this option when it is selected.

Get More Money

If you are out of money, you can select this option to get another \$1000.

Options Menu

When you are playing any of the six games, you will have an options menu on the menu bar. The choices available on the options menu are described in the individual sections for each game in this manual.

THE GAMES

By selecting a game you will go to that area of the casino. You can see what the other players have to say and then play the game.

Black & White users: When you select a game, you will go directly to that game. You will not have the opportunity to have the characters in the games talk.

Roulette

After selecting roulette from the lobby, you will find yourself standing around the roulette table with several people (color version only). Most of the people here have something to say. When you are ready to play, click in the middle of the table. Trump Castle II offers two types of roulette, 0 and Double 0. When asked, choose the one that you want to play. You will then be asked to select the table minimum (\$1, \$5, \$25, \$100).

Placing bets

The names of all the players along with the amount of their bankroll are displayed on the lower righthand side of the screen.

Each player can take turns placing bets between each spin. To switch the current player, click on the desired Player button on the lower lefthand portion of the screen.

To place a bet, click on the desired chip amount and hold the mouse button. Now place the pointer over the table at the point at which you would like to place your bet and release the button. The chip will stay at the selected spot.

When all bets are placed, click on the **Spin** button.

Clearing bets

To clear all the bets off the table, click on the **Clear** button.

Options Menu

Clear Bets

To clear all bets off of the table. Performs same job as Clear button.

Spin Wheel

Performs same function as Spin button.

Payoffs

Shows a table of how much each type of bet pays. Click the mouse button to make the payoff table disappear.

Rules

Displays the basic rules for playing roulette. Click the mouse button when you are done reading the rules.

Quit Roulette

Performs the same function as the Quit button.

Craps

After selecting craps, you will see the craps table with several other guests standing around (color version only). You can see what they have to say and then click in the middle of the table to play. You will be asked to select a table minimum (\$1, \$5, \$25, \$100).

Placing bets

The names of all the players along with the amount of their bankroll are displayed on the lower righthand side of the screen.

Each player can take turns placing bets between each roll. To switch the current player, click on the desired Player button on the lower lefthand portion of the screen.

To place a bet, click on the desired chip amount and hold the mouse button. Now place the pointer over the table at the point at which you would like to place your bet and release the button. The chip will stay at the selected spot.

When all bets are placed, click on the **Roll** button.

Clearing bets

To clear all the bets off the table, click on the **Clear** button.

To clear an individual bet, place the pointer over the bet and hold down the command key and click the mouse button.

Options Menu

Remove a bet

Tells you how to remove an individual bet from the table.

Roll Dice

Performs same function as Roll button.

Payoffs

Shows a table of how much each type of bet pays. Click the mouse button to make the payoff table disappear.

Rules

Displays the basic rules for playing craps. Click the mouse button when you are done reading the rules.

Quit Craps

Performs the same function as the Quit button.

Blackjack

After selecting Blackjack, you will be seated at a blackjack table in the casino (color version only). There will be many other people around the table. You can see what they have to say and then click in the middle of the table to play. You will then be asked to select a table minimum (\$1, \$5, \$25, \$100).

At Trump Castle, Blackjack is played with six decks of cards.

The names of all the players along with the amount of their bankroll are displayed on the lower righthand side of the screen.

The four playing positions are represented by white boxes on the screen. Any player can play in any position, or in more than one position.

Placing bets

Select a player by clicking on one of the four player buttons on the lower lefthand side of the screen.

To place a bet for the selected player, click on the desired chip amount and hold the mouse button. Now place the pointer over the table at the bet circle below the white box for the desired position. Release the button and the chip will stay at the selected spot.

When all bets are placed, click on the **Deal** button.

Clearing bets

To clear all the bets off the table, select the **Clear Bets** option from the Options menu.

Game play

The dealer will deal cards to each position that has made a wager. After all of the hands have been dealt, position one will be highlighted. The player who has wagered in this position will be given two options at the bottom of the screen (Hit and Stand). The player will make his/her choices by clicking on the appropriate buttons.

When that player stands or busts, the box will move to the next position and that player can make his/her choices.

If the dealer's face card is an Ace, each player will be offered insurance. Follow the instructions on screen for placing insurance bets.

After all of the players have made their choices, the dealer will either stand or take a hit. After the dealer stands or busts, all winning bets will be paid.

Options Menu

Clear Bets

Remove all bets from the table.

Hit

Gives current player another card.

Stand

Current player stands on current cards.

Double Down

Current player can choose to double his/her current bet and receive only one additional card. You are prompted to enter the amount of additional bet to make.

Split Pair

If the current player has been dealt a pair, he/she can choose to split. The amount of the bet is doubled and cards are dealt to each card from the pair.

Deal

Performs the same function as the Deal button.

Payoffs

Shows a table of how much each type of bet pays. Click the mouse button to make the payoff table disappear.

Rules

Displays the basic rules for playing blackjack. Click the mouse button when you are done reading the rules.

Quit Blackjack

Returns to the main game screen.

Video Poker

When you select video poker, you will see three video poker machines (color version only). Click on the center machine to play. You will be asked to choose to play the \$1, \$5, \$25 or \$100 machine.

The name of the current player and their bankroll amount is shown on the top of the screen. Click on the **Change Player** button to select a different player.

Video poker allows you to play 1 to 5 coins. Click on the desired number of coins. After the coins are put into the machine, click on the **Deal** box to deal the cards. Below each card is a **Hold** button. Click on this button to toggle the card. After you have made your choices, click on the **Deal** button to re-deal.

Options Menu

Deal

Performs the same function as the Deal button.

Payoffs

Shows a table of how much each type of bet pays. Click the mouse button to make the payoff table disappear.

Rules

Displays the basic rules for playing video poker. Click the mouse button when you are done reading the rules.

Quit Video Poker

Returns to the main game screen.

Baccarat

After selecting Baccarat, you will find yourself seated at a Baccarat table (color version only). You can see what your tablemates have to say and then click on the middle of the table to play. You will then be asked to select a table limit (\$1, \$5, \$25, \$100).

The names of all the players along with the amount of their bankroll are displayed on the lower righthand side of the screen.

The four playing positions are represented by numbered boxes on the screen.

Placing bets

To place a bet, click on the desired chip amount and hold the mouse button. Now place the pointer over the table at the bet location (Tie, Banker, Player) above the box for the desired position. Release the button and the chip will stay at the selected spot.

When all bets are placed, click on the **Deal** button.

Clearing bets

To clear all the bets off the table, click on the **Clear** button.

Options Menu

Clear Bets

Performs the same function as the **Clear** button.

Deal

Performs same function as **Deal** button.

Payoffs

Shows a table of how much each type of bet pays. Click the mouse button to make the payoff table disappear.

Rules

Displays the basic rules for playing Baccarat. Click the mouse button when you are done reading the rules.

Quit Baccarat

Returns to the main game screen.

Slot machine

After choosing to play the slot machine, you will see several guests standing in front of a row of machines (color version only). Click on the rightmost machine to play.

You will then be asked to select what type of slot machine to play (\$1, \$5, \$25, \$100).

You will be standing in front of a slot machine. The name of the current player along with their bankroll amount is shown at the top of the machine. To change the current player, choose **Change Player** from the Options menu.

The slot machine will accept from 1 to 3 coins. To put the coins in, click on the desired button. After the desired coin button is selected, click on the handle to spin the machine.

Options Menu

Spin

Performs the same function as the handle on the slot machine.

Change Player

Selects a different player to be the current player.

Show Payoffs

If you want the program to display coins representing the payoff each time you win, select this option. A check mark indicates the option is selected.

Rules

Displays the basic rules for playing slots. Click the mouse button when you are done reading the rules.

Quit Slots

Returns to the main game screen.

Miscellaneous

Opening other applications while using Trump Castle II may overwrite chips and/or cards left on the table.

There may be some versions of the Macintosh Classic that will fail if Trump Castle II is the first application run after turning the computer on.

Additional Information

Backups

Backup copies of Trump Castle II are available directly from IntraCorp. The \$12 charge for the set can be paid by check, money order, American Express, Visa, MasterCard, or COD. To order, write to IntraCorp, Inc., 7200 Corporate Center Drive, Suite 500, Miami, FL 33126 or call 1-800-INTRACO (1-800-468-7226) between 10 a.m. and 6 p.m. Eastern time (Monday through Friday).

Technical Support - Please read carefully

Registered owners of this software product are entitled to technical support from our Customer Service Department. If you have any problems or questions, please call Customer Service at (305) 591-5900 between 10 a.m. and 5 p.m. Eastern time (Monday through Friday). Please note that the warranty card that came with this product must be mailed to IntraCorp before any assistance can be given. Please allow sufficient time for the card to arrive before calling Customer Service.

The IntraCorp Customer Support bulletin board is available to all users. Callers can leave questions to the Technical Support department or to other users, and get information on software upgrades and new releases. The board is available to users 24 hours a day. The board's number is (305) 471-8962. It is accessible at 300, 1200 or 2400 baud; no parity; 8 data bits; 1 stop bit.

Credits

Trump Castle II is sold under license to the user. Please see the licensing agreement included with the package for details of the license.

Macintosh is a trademark of Apple Computers Inc.

Program, manual and packaging design Copyright 1991, 1992 IntraCorp, Inc.
Trump Castle II User's Manual by David Turner.